



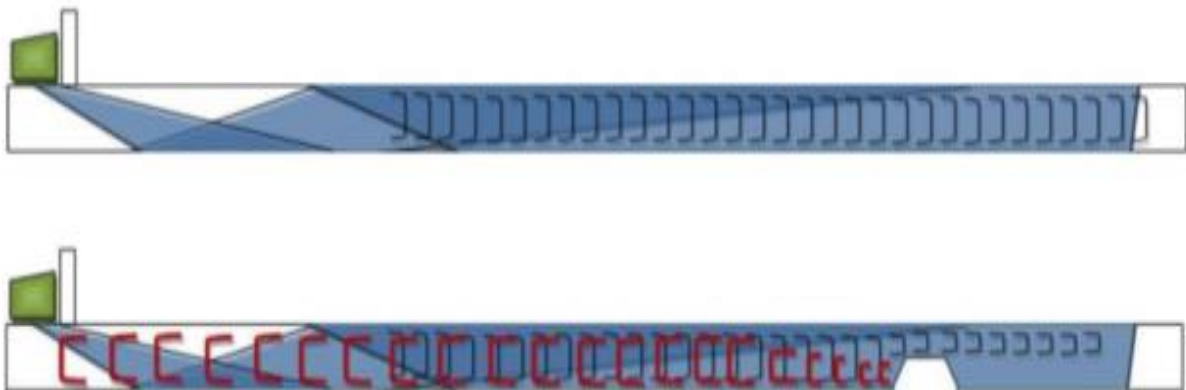
## ***Short Range Guided Wave UT-SRUT***

*Tech Corr offers “Short Range Guided Wave UT-SRUT” a unique ultrasonic screening tool designed to inspect difficult to access locations such as:*

- *Underneath Saddle Supports*
- *Under clamps*
- *Under composite repairs*
- *The annular plate of above ground storage tanks (In Service)*
- *Pipe to soil interface areas*
- *Pipe to Cement interfaces*

***How It Works*** – Short-Range Guided Wave is a technique which uses low frequency sound waves to flood the wall thickness of a pipe or a plate, and then reflect back at interfaces such as cracking or corrosion/pitting. A standard ½” near field probe allows for corrosion and defect inspection in limited space and close proximity situations. This technique is to be used as a **screening tool only as remaining wall thickness measurements cannot be achieved**. However, reflection distance can be measured with precise accuracy. Using a focalized probe, the ultrasonic beam coverage within a material is around 24” and all can be accomplished through 1/8” or less of coating.

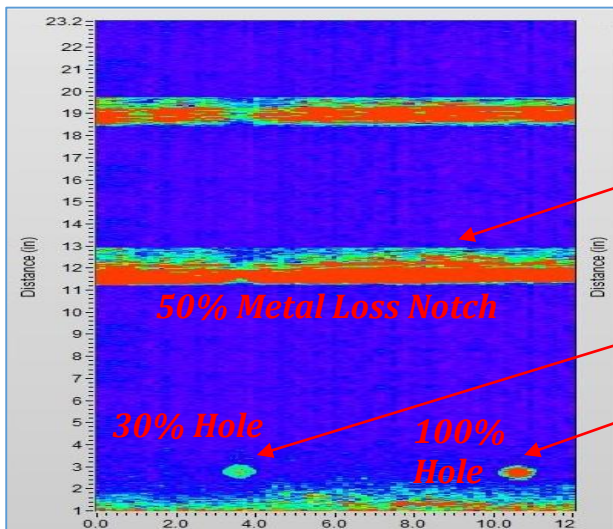
*By using different probe designs it is possible to inspect material thickness up to 1” thick.*



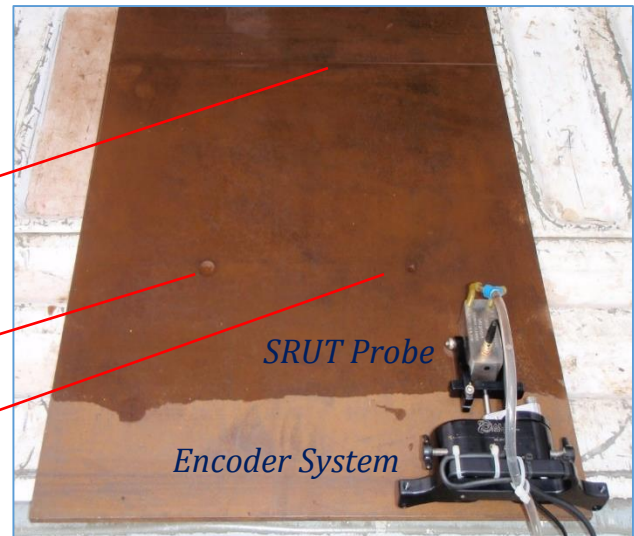
***Example of the Ultrasonic propagation of the SRUT in a plate.***

*TechCorr uses the latest and most advanced SRUT system in the industry which allows to fully encode the inspection from a reference point. This allows to obtain digital images that can be used to create a base line for future inspections.*

*The short range guided wave technique uses a modified B-Scan graph but displays information in terms of "Plan View" using surface distance calculations. This technology can detect, image, record amplitude, size, and record X-Y location of corrosion and /or various defects.*



*SRUT - B Scan Display*



*Calibration Block*

### ***Conditions to apply SRUT?***

*Condition 1: Surface condition under the probe shall be free on corrosion and heavy coatings to allow a proper UT propagation.*

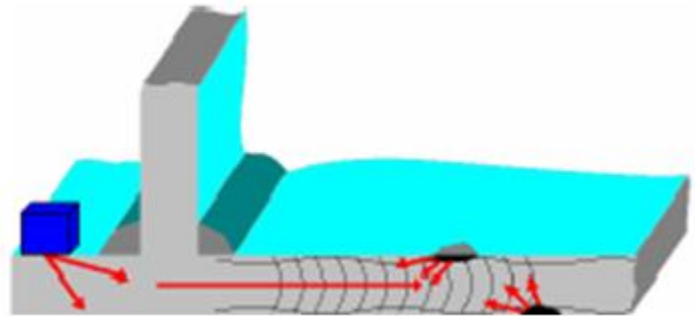
*Condition 2: The maximum surface temperature is 150F*

*Condition 3: SRUT can be applied from 1 1/2" (Special contour probe) up to flat surfaces.*

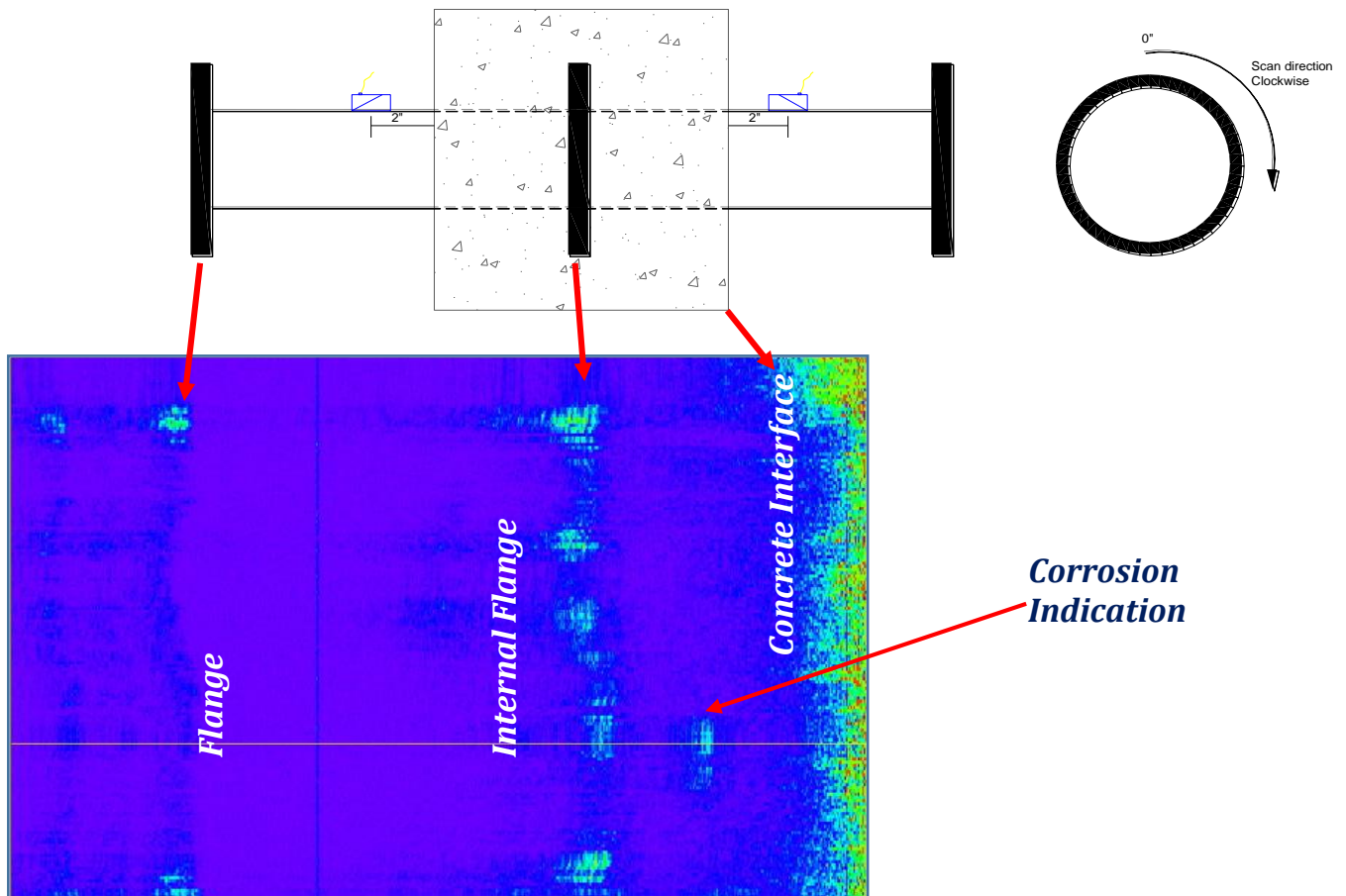


## Examples of SRUT applications.

- **Tank Chime Inspection (In Service).** The tank chime shall be at least 1.5" to allow a proper probe placement.

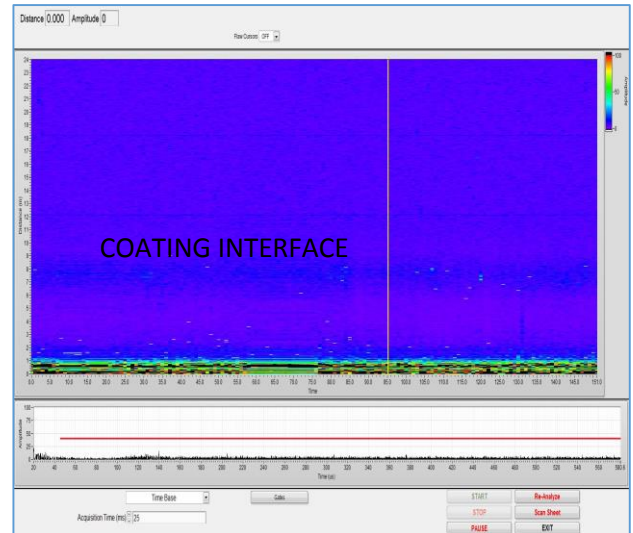


- **Pipe to Concrete Interface (Puddle Pipes).**





- **Pipe to Soil Interface Inspections.** Any types of wraps or heavy coatings shall be removed at the sensor location to allow a proper UT propagation.



- **Underneath Saddle Supports.**

