



# OVERPIPE® GHRE MESH

High elastic resistance mesh for buried networks

APPROVED BY



## » APPLICATION

The OVERPIPE GHRE mesh is a very good alternative to simple warning mesh, with a low extra cost.

Thanks to its very good resistance to picking, it will keep its integrity when attacked by a shovel, and will give the driver a very efficient warning.

It is validated by the French governmental regulatory (GESIP) as a compensatory measure offering a risk reduction coefficient of 0.075, eight times higher than a regular warning mesh.

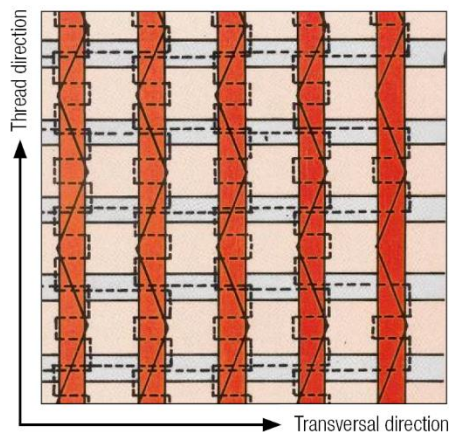
## » DESCRIPTION

The OVERPIPE GHRE mesh is made of high tenacity polyester yarns, using the warp-knitting technology. The mesh is covered with a yellow acrylic coating environmentally friendly (colors customizable).

Depending on the width, reinforced stripes on the edges enhance the resistance and a customizable printed message increases the warning efficiency. It has a reinforced strip where the warning message will be printed. The mesh comes in the width requested by the client (maxi 2.50m).

## » TECHNOLOGY

The warp knitting technology allows to get an immediate tension capacity on the warp and weft high tenacity yarns.



## » DESCRIPTIVE CHARACTERISTICS

Raw material	High tenacity multifilament polyester yarn
Connection reinforcement	Specific reinforcement of the connection between weft and warp cables
Coating	Stiffening acrylic coating in aqueous phase
Color	Yellow or others on demand
Marking	Fully customizable warning message. Letters 70mm

## » OTHER CHARACTERISTICS

Dedicated geometry	Specific reinforced strips
Technology	Warp-knitting
Width	On demand. Maxi 2.50m
Length	100-200m rolls depending on width